

Kirkwood

Bold Service. Quality Printing.

♥ We prefer print-ready PDF/X-1a:2001 or packaged native files

✓ Double check the following:

T Are all **fonts embedded**?

▣ Are all **images 300-350 DPI**?

💧 All colors should be **CMYK** not RGB

💧 Only use PMS colors if printing as spot

⬛ **Rich Black** areas use 40/30/30/100 build

⚙️ **Small Black** type should be 100% Black

💧 Be mindful of overprint settings

— Safe Area - For Text/Art

— Not Visible After Folding

— Bleed line - Extent of Artwork

— Cut line

- - - Folding line

KWPF-1: 9 x 12" POCKET FOLDER Double Sided Dieline Template

This die and final document size must not be manipulated or altered in any way.

Additional charges will be added if your final file doesn't line up correctly to this die or if you forget to delete this layer.

All artwork should extend to the interior of the green lines (Bleedline) which is 1/8" more than the final trim line.

Keep artwork off of the glue tabs from the bleedline to the page edge.

The blue lines represent the "Safe Area" for text, keep any important text out of the way of folds and cuts, which is 1/8" before the final trim or fold line.

Visual representation of all lines are shown in the guide below.

Pocket art should show upside down in this file, once folded it will show right-side up inside the folder.

Please export your file as a PDF using our Kirkwood setting which is included in the zip you downloaded.

If you need assistance or information on how to use our output setting call 978.658.4200 or visit www.kirkwoodus.com

Glue Strip. No Art in this area

Glue Strip. No Art in this area

OUTSIDE BACK COVER

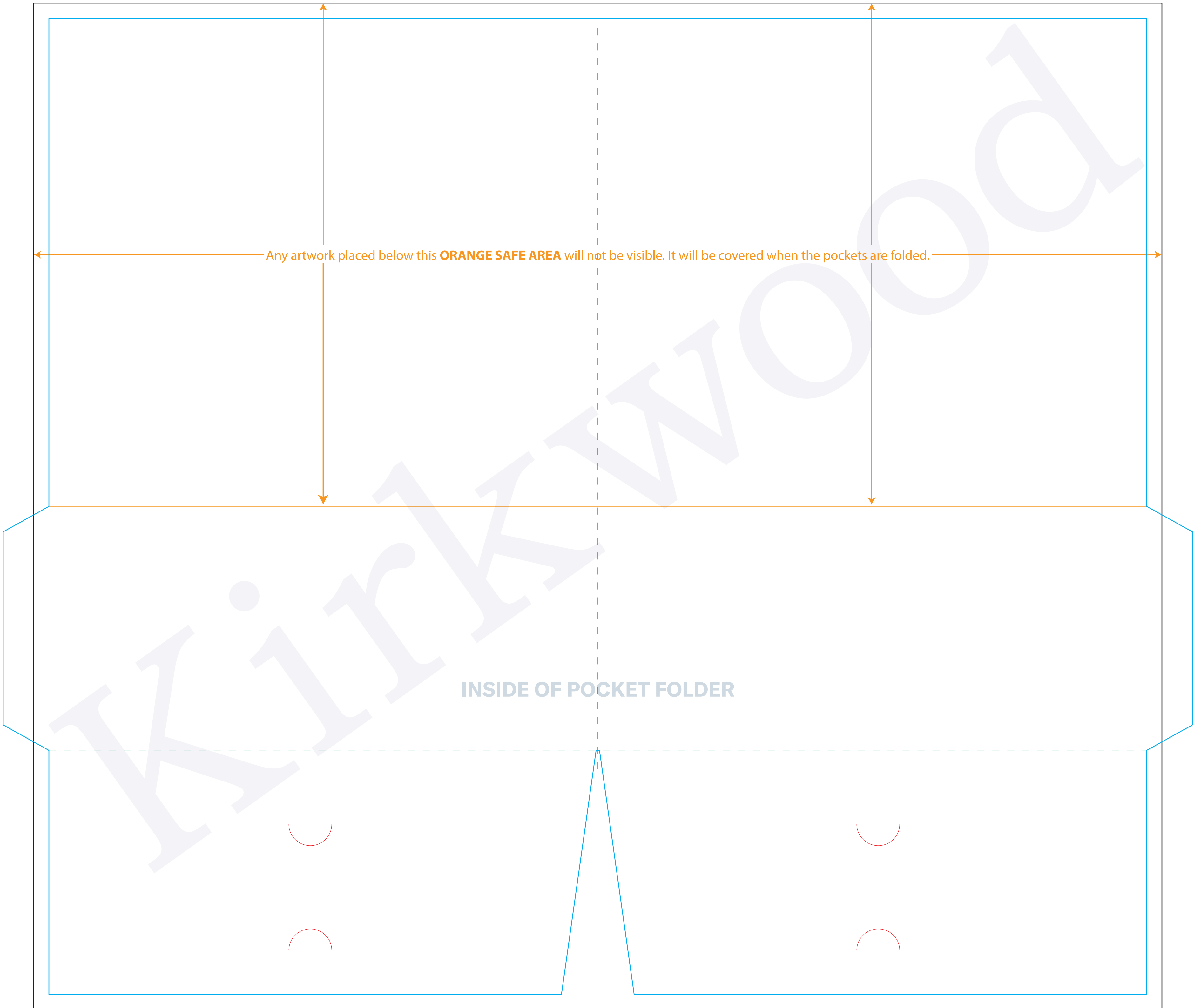
OUTSIDE FRONT COVER

Make sure your design is upside down from the fold-line to the bleedline on both pockets.
This will show upright when folded.

You don't have to use the business cards slits.
We've put them on a separate layer so you can easily delete them.

OUTSIDE RIGHT POCKET

OUTSIDE LEFT POCKET



Any artwork placed below this **ORANGE SAFE AREA** will not be visible. It will be covered when the pockets are folded.

INSIDE OF POCKET FOLDER